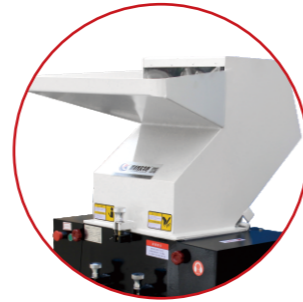


# 强力粉碎机

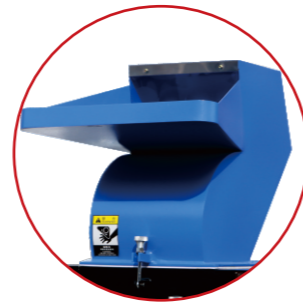
## POWERFUL CRUSHER



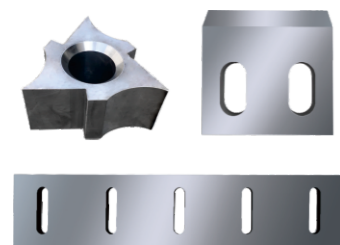
直口上箱  
Straight mouth box



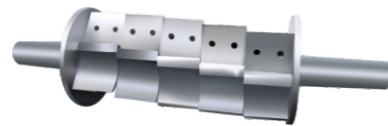
鸭口上箱  
Duck mouth upper box



孤型上箱  
Curved upper box



刀架, 刀片  
Cutter saddle, cutter



刀架  
Cutter saddle



筛网 Screen netting  
筛网之孔径决定破碎颗粒大小,  
可根据客户要求订做。  
Customiaed screen mesh available

### 机器概述 >>

- 适用面广, 可集中破碎、回收各种材质、形状塑料制品。
- 加工工艺成熟, 箱体、刀架等重要部件采用整体加工, 确保配合精度。
- 结构合理, 操作方便, 省电耐用, 高效经济。
- 设有多项安全保护装置, 确保操作安全。
- 投料斗双层设计, 减少噪音。

- Tailored to meet a wide variety of requirements, able to granulate & recycle all kinds of plastics material of different texture and shapes.
- Well constructed with unique mechanical parts to ensure precision.
- Strong structure, easy to operate, low electricity consumption & durable.
- Full safety device installed, to ensure safe operation.
- Double wall hopper designed, low noise.

### 产品特点 >>

1. 动力座为梯形装备设计使用肩力分解造成切屑力倍增长。
2. 重荷型轴承及油封装置并有防音隔板能有效防止震动确保加工物不受油脂污染。
3. 马达装有超荷保护制, 与电源连锁系统附有清洗刀具保护制, 确保清洁时的安全。
4. 刀具安装设计可伸缩调整, 用钝后可多次更磨, 反复使用, 寿命特长。
5. 分离设计, 落料斗粉碎室过滤网, 便于拆洗。
6. 小型机器加装脚轮, 移动方便。

1. Equipped with power seats for the trapezoidal design, the use of force debris decomposition, resulting in chip power-told increase
2. Heavy load-bearing and oil seal device, and a soundproof partition, can effectively prevent vibration, ensure that the processing material not pollute
3. Motor with overload protection system, and power supply chain system, with cleaning tool protection system, to ensure the safety of cleaning
4. Cutting tools installation design can be adjust, more ground after using blunt, repeatedly used, long life
5. Separator design, drop hopper, crushing chamber filter, facilitating unpick and wash
6. Small machining outfit casters, convenient to move, the mainframe computer with adjustable shock absorber feet, work smoothly.

### 技术参数 TECHNICAL PARAMETER

型号 Model	180	250	300	400	500	600	800	1000
粉碎能力 KG/H Crushing capacity	50-100	150-200	200-300	250-450	400-700	450-800	650-1300	750-1500
电压 Voltage	380V (三相电)							
电机功率 KW Power	1.5/2.2	4	5.5	7.5	11	15	30	37
电机功率 HP Power	2P/3P	5.5	7.5	10	15	20	37	50
旋转刀数量 Rotary Blade	9	6	9	12	15	18	24	30
固定刀数量 Fixed Blade	2	2	2	2	2	4	4	4
旋转直径 Rotation diameter	148	225	240	250	310	350	400	400
筛网孔径 MM Screen	6	8	8	10	10	10	12	12
刀轴转速 r/min Shaft Speed	520	617	617	650	627	576	480	480
进料口尺寸 MM Feed Port Size	150*200	200*250	220*320	250*420	300*520	330*620	500*820	550*1020
料匣尺寸 (MM) Bin size	440*285*209	715*305*225	795*370*225	865*470*257	1050*620*277	1050*710*330	/	/
外形尺寸 MM Dimension	630*520*950	900*700*1050	1000*750*1180	1060*880*1320	1150*1000*1450	1200*1060*1650	1850*1410*2130	1950*1580*2500
机器重量 KG Weight	120	230	330	430	550	620	1700	2800

产品规格参数如有变动, 恕不另行通知。  
Specifications are subject to change without notice.



粉碎前 Before crushing



粉碎后 After crushing